



vinci
play

lekolar®



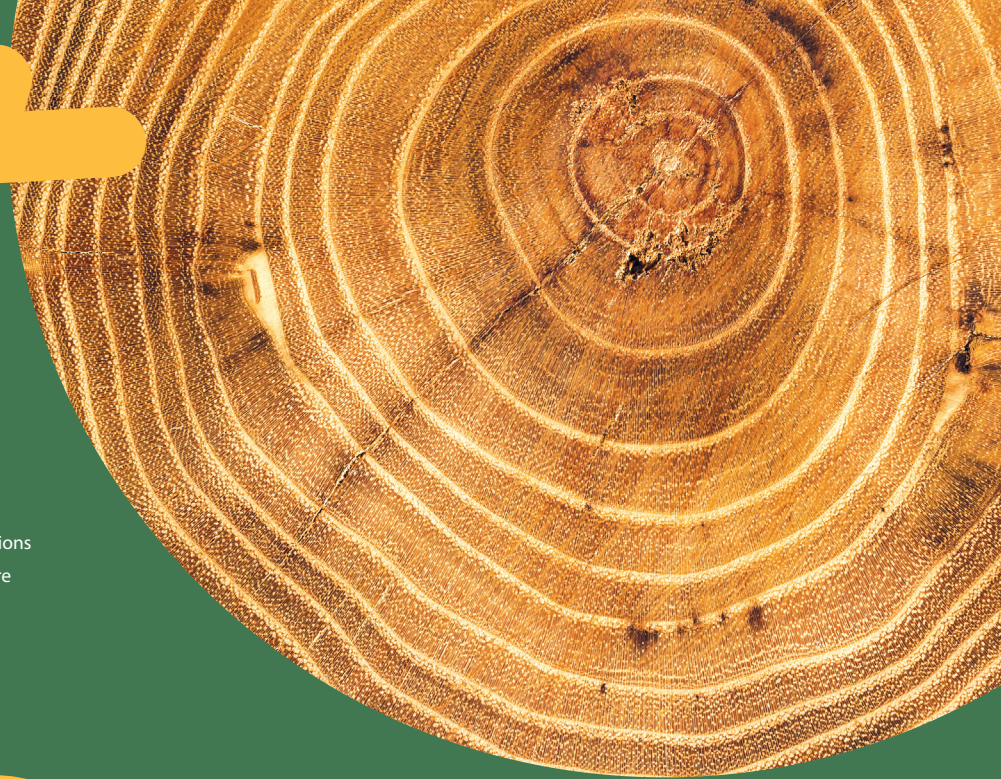
Robinia

Guarantee and Maintenance

About Robina

Robinia – acacia wood is the most durable wood present in Europe. It is resistant to destructive influence of external factors therefore it doesn't require wood finishing.

It is distinguished by exceptional hardness, resistance to moisture or contact with soil, that's why it is an ideal material willingly used for manufacturing wooden playground equipment. When acquiring wood we are sure that it originates from european plantations with FSC® certificate (FSC®-C163573) and other controlled sources, due to which we care about future in line of sustainable development.



**Robinia
Wood**

Wood Colour

Acacia wood is characterized by natural light colour which can be changed under influence of weather conditions and humidity. It is a natural process when using organic natural materials. Usage of natural Robinia wood opens the doors towards discovery and boost of imagination; kids can experience natural materials on a playground. As researches show, playing in natural environment forms positive psychological reactions in kids, reduces stress and causes general feeling of tranquillity and content.



Wood characteristics

There are tensions in solid wood which cause that cracks appear. They don't have negative effect on construction durability, as well as they don't increase risks of rot or fungus appearance. Due to natural specificity of wooden material, cracks close themselves, depending on external conditions. It is a natural process that's why such wood changes may appear with time. Larger cracks demand repair in accordance with Manufacturer's instructions. Structure changes of wood which cause the risk of construction damage are covered by 15 years guarantee.

During regular inspections major deformations should be taken into consideration, especially when such deformation occur in places where large loads affect construction, such as slide, fireman's pole etc or in places where a crack causes a risk of entrapment. In order to check if a crack, knags or scratches could cause safety issues, it should be checked with applicable safety norms. If a deformation doesn't cause violation of applicable safety norm, it is considered as natural characteristic of Robinia wood and such type of a crack is not covered by guarantee. Instead, in situation when the size of a crack, gap causes great risk of construction damage, Vinci Play is obliged to supply replacement element under conditions described in the Guarantee Card.

More information in Guarantee Card / maintenance instruction.



Natural shapes

Natural deformations of wood give Robinia playground its unique shape and specificity. Each beam is original and one of a kind, and differs in shape and diameter along its entire length. Application of special system of connections as well as preliminary preparation of assembling places allow to keep identical fitting of equipment elements. Thanks to this, the placement of elements is always the same, and equipment conforms to safety norm.

Weather conditions, periodic changes of humidity and temperature due to changes in seasons may cause wood cracking, that's why in order to guarantee the expected durability, the appropriate maintenance is required, which allows simultaneously to keep safety and attractive look of equipment for many years.

More information in Guarantee Card / maintenance instruction.





Unique wood texture

Natural element of Robinia look are also knags. These are the places in which branches were growing from the tree trunk. Natural wood texture allows kids to touch and to feel tree nature and to boost imagination. During production each beam is checked from the point of view of norms and safety. Natural knags are allowed and it may occur that such a snag will be removed or will fall out, which leads to opening / gap. Then such a place should be treated according to maintenance instructions. During regular inspections attention also should be paid to them.

We as a responsible manufacturer, would like to be sure that the playground made of Robinia, undergoes regular maintenance. Thanks to which its functional features are kept in full and safety is kept on the highest level.

Guarantee

Experienced employees and high quality materials ensure the highest quality of our products. That's why we may offer many years guarantee of failure-free and fully safe use of our equipment. We also provide non-warranty services, orders for spareparts for the majority of elements are completed within 45 hours. Below guarantee terms:

30

30 years – strength of metal and stainless steel construction elements

15

15 years – strength of Robinia wood construction elements

10

10 years – strength of elements structure out of HDPE and HPL plates

5

5 years – resistance to corrosion of stainless steel, hot-dip galvanized and powder coated steel elements





Durable metal elements

In order to guarantee the highest quality and longevity of the products from Robinia Range, we have enriched them with handrails, slides and other construction elements made of stainless steel and hot-deep galvanized steel.

Safe finishing

Due to wood processing by means of grinding we smooth its surface, getting rid of any burrs and irregularities, ensuring as well that the product looks aesthetic as well as it is safe.



Anti-slip HPL plates

Anti-slip HPL plates are an excellent addition used for different type of steps and small platforms. Thanks to the highest quality, it is resistant to chemical and biological factors, UV-rays effect and variable atmospheric conditions. Safe anti-slip structure, subdued colours and natural look combine perfectly with wooden style of the range.



Quality control

The products undergo many stages of control. Our quality specialists use laboratory equipped with modern devices and gauges to assess materials quality. The wood is processed in several stages. It is seasoned, carefully selected and grinded in order to deliver the product of highest quality. Additionally to avoid the effect of wood splitting, caused by the tension in it, the ends of beams are cross bolted.

Packaging and transportation

All the elements are packed in such a way to enable both road transport (van, trailer or truck) and sea transport or air transport. The appropriate packaging of elements optimizes the space and transport costs enabling also convenient unloading without the necessity of using a crane or some special equipment.



Quick and easy installation

All the products are preliminary assembled at our factory before shipment in order to avoid entrapment risks. We have developed a special connection system, represented among others by appropriate undercuts, specialized connectors and cutting holes in key places. Thanks to legible instructions and individual marking of elements, quick and easy assembly is possible and it doesn't require any specialized knowledge or equipment.





15

15 year warranty

vinci
play

lekolar[®]

