



Introduction to 3D scanning with SOL 3D scanner

LESSON PLAN



SOL[®] 3D scanner

OBJECTIVE

Students will be able to successfully scan an object using the SOL 3D scanner, and export their scan for printing or online sharing.

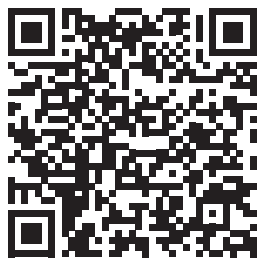
OVERVIEW

Additive manufacturing is expanding at a rapid pace in multiple industries. Just as computer know-how was added to classrooms over the past decades, 3D knowledge is becoming a foundational capability for many professions.



This course plan will help students overcome some of the mental blocks and cognitive hurdles that may slow them from exploring 3D technologies.

FIND RELATED LINKS



<https://scandimension.com/pages/3d-scanner-for-education-school>

OUTLINE (LINKS VIA QR)

10 minutes – Introduction and discussion

Discuss where 3D technology is being used in the world today. Ideas from the students can be from engineering, the arts, architecture, virtual reality, games, to food and much more.

15 minutes – Hardware set-up

Setting up the SOL 3D scanner can be assisted by watching these videos:

- Quick setup guide
- Near or far position?

10 minutes – SOL software installation

Download SOL software and launch it. Follow the on-screen directions to begin scanning. The download page includes a link to a 'Getting started' instruction and troubleshooting.



10 minutes – Video learning

Watch these videos with basic knowledge and information about the SOL 3D scanner:

- A SOL 3D scanning from start to finish
- Facts about requirements
- How to improve 3D scanning speed

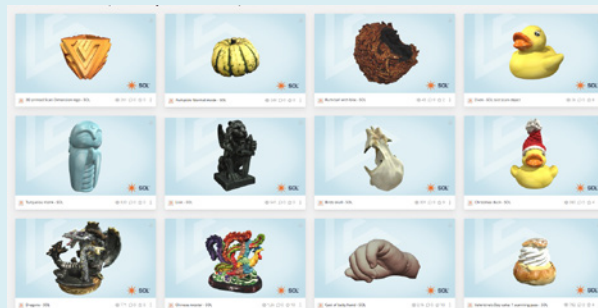
10 (+30) minutes – Assignment and instructions

Assignment:

- Group students (pairs, or small groups)
- Have each group identify an object to scan (pay attention to the size and surfaces/shapes limits for scanning with SOL)
- Outside of class/lesson have each group perform a single scanning pass of the object (approximately 30 minutes will be required, so multiple scanners/computers are needed or time allocated for each group to complete a scan)
- Set a due date for when the scan must be completed

10 minutes – Knowledge Base introduction

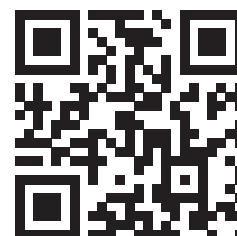
Cover resources students may find useful in completing their first scan.



3D SCANNED EXAMPLES

Visit our collection on Sketchfab and inspect these 3D models scanned with SOL 3D scanner. Log in and download for your own use.

<https://skfb.ly/oPrPS>



WWW.SCANDIMENSION.COM

Scan Dimension HQ – Global Scanning Denmark A/S
Copenhagen, Denmark, Phone: +45 4814 1122, contact@scandimension.com

Scan Dimension US – Global Scanning Americas Inc.
Chantilly, VA. 20151, USA, Phone: +1 (877) 226 6839, contact@scandimension.com



SCAN DIMENSION®