



# CREATOR 3 PRO

Highly Effective and Professional 3D Printing Equipment



  
Brand New  
Second-generation  
Upgrade



Independent  
Dual Extruders  
Supporting  
Water-soluble  
Materials Printing



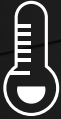
Industrial-grade  
Precision  $\pm 0.2\text{mm}$



300\*250\*200mm  
Build Volume



120 °C  
Build Plate



The extruder  
supports up to  
320 °C



Wide Range of  
Compatible Filaments



New FlashPrint  
Slicing Software



Cloud Platform  
Printing

Creator 3 Pro realizes further optimization of the extruder structure and printing motion control. It adopts new-type extruders, optimizes the extruder blowing structure and heating assembly, configures the second-generation upgraded leveling sensors, changes the position of extruder sensors, and greatly improves the temperature rise speed of the platform, which enables better printing quality and more efficient printing services.

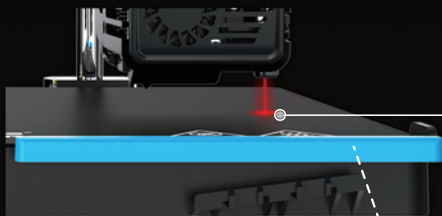




The heating speed of the extruder is increased.

It takes only 1 minute to heat to **200°C**

**New dual-fan configuration**  
for better printing quality

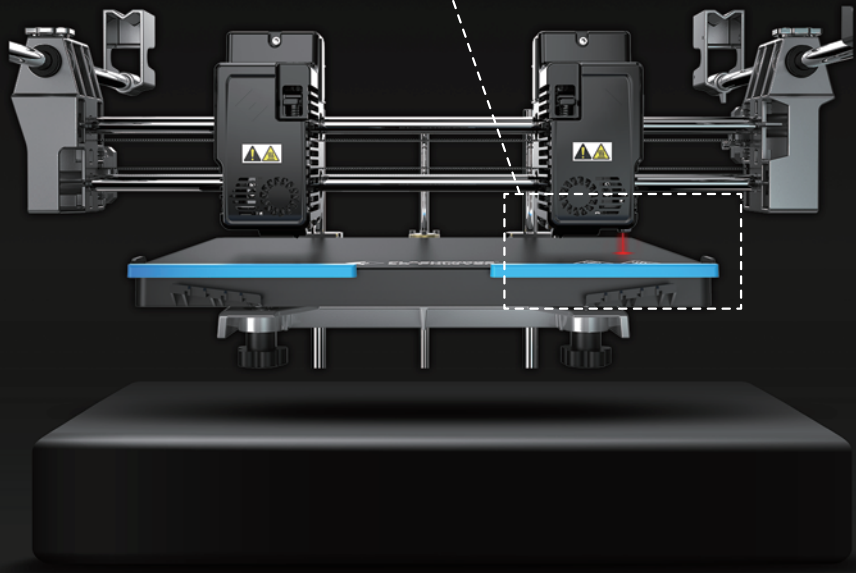


**Integral detachable nozzle and heating assembly**

Easy maintenance and more convenient operation

**New Extruder Sensor Upgrade Adjustment**

It improves the success rate of leveling and makes the printing positioning more accurate.





0.4mm  
Stainless Steel



0.6mm  
Stainless Steel



0.8mm  
Stainless Steel



Highly durable & multi-caliber nozzle  
which can heat up to 320°C



0.4mm Carbon Steel  
Available for printing carbon fiber\*  
composite materials

\* The carbon fiber composite materials are PACF



0.6mm Carbon Steel  
Available for printing carbon fiber\*  
composite materials



0.8mm Carbon Steel  
Available for printing carbon fiber\*  
composite materials

# Build Plate Heating Rate Comparison

3 MIN  
20 MIN  
14 MIN



## Creator 3 Pro

For Creator 3 Pro, it takes only **3 MIN** to heat up the build plate to 110°C.

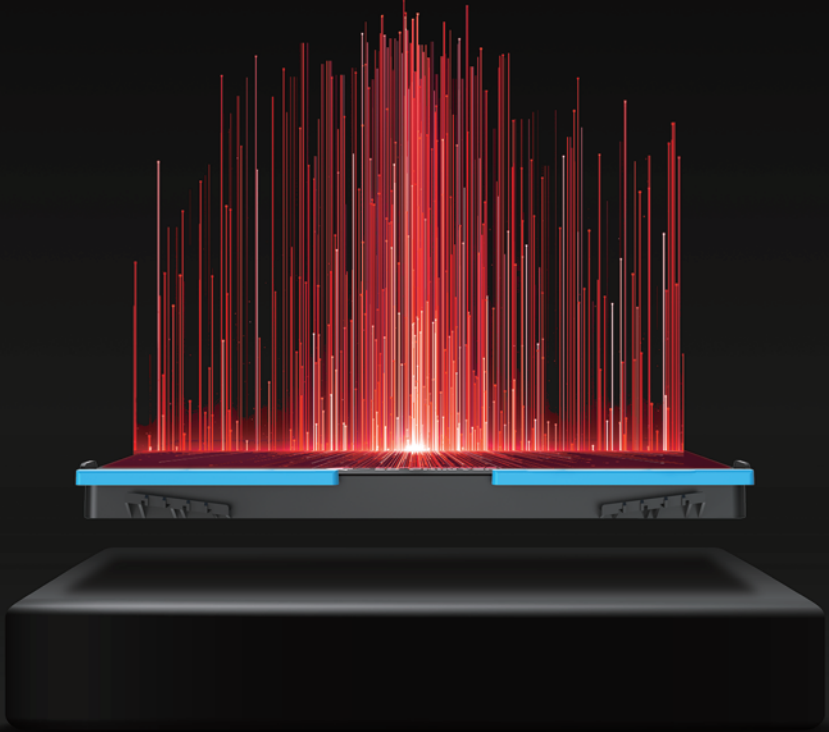
For the 3D printer of some brand, it takes 20 minutes for the build plate to heat up to 110°C.



It takes only 3 minutes to heat up the build plate to 110°C

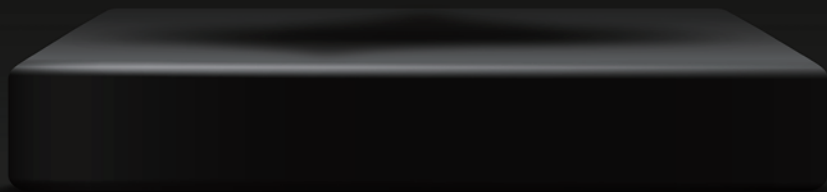
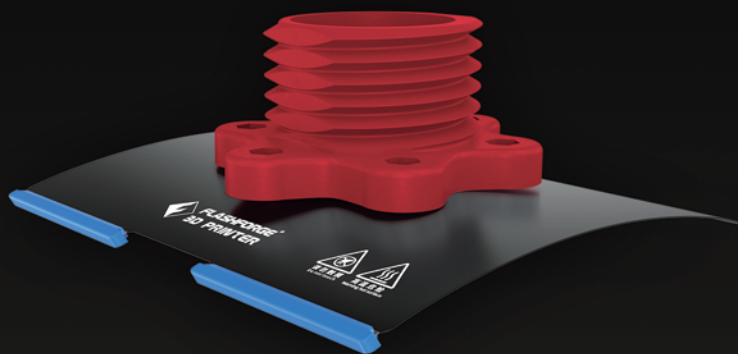


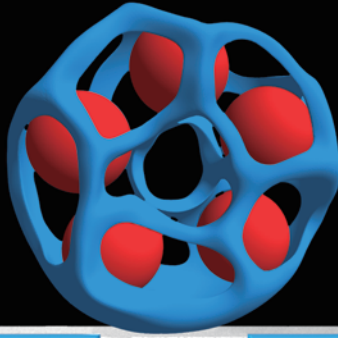
The heating speed of the build plate is increased by 5 times



## Flexible Magnetic Steel Plate Platform

Excellent thermal conductivity and special platform sticker to enhance the adhesion of printing materials



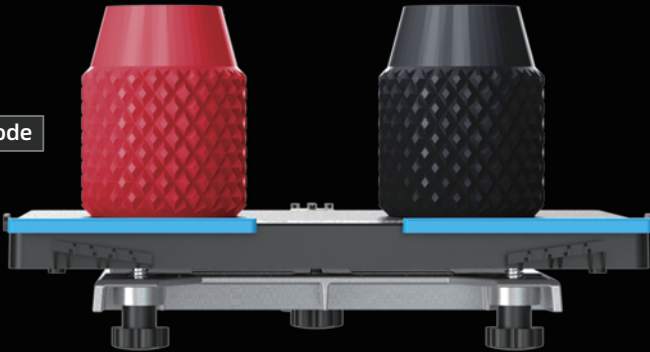


**IDEX structure,**  
with multi-mode printing  
supported and efficiency  
doubled.

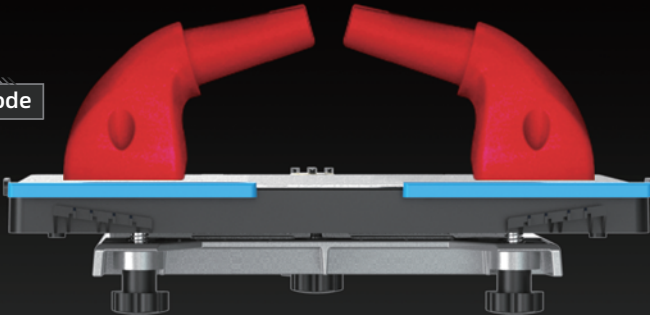
**Dual-color Mode**



**Duplicate Mode**

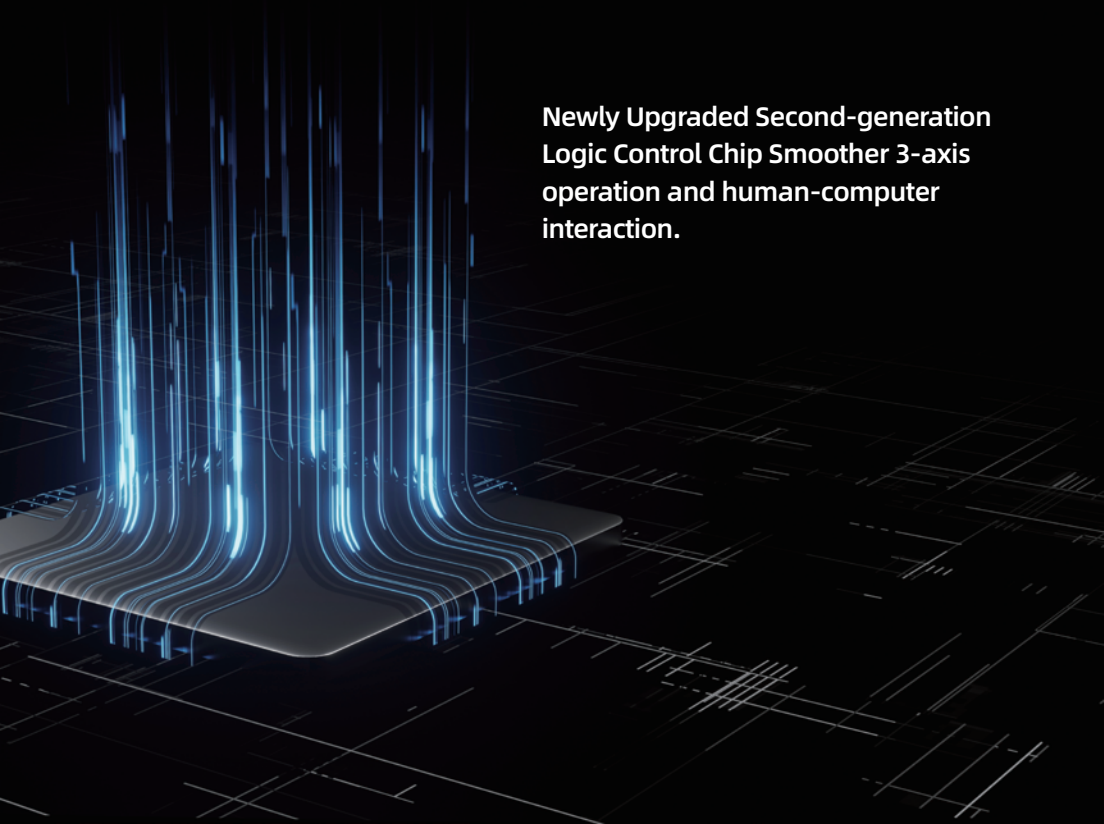


**Mirror Mode**





**Newly Upgraded Second-generation  
Logic Control Chip Smoother 3-axis  
operation and human-computer  
interaction.**





## Technical Specifications

Extruder Type	IDEX (Independent dual extruders)
Printing Precision	± 0.2 mm
Build Volume	300 x 250 x 200 mm
Nozzle Diameter	0.4 mm ( 0.6/0.8mm )
Print Speed	10~150 mm/s
Maximum Extruder Temperature	320°C
Filament	PLA / ABS / PA / PC / PVA / HIPS / PETG / Wood ASA / PA-CF
Connectivity	USB / Wi-Fi / Ethernet
Platform Heating Temperature	120°C
Auxiliary Leveling	√
Out of Filament Reminder	√
Replaceable Platform	√
Resume Printing After	√
Power Failure	4.3-inch
Touch Screen	√
Flexible Magnetic Platform	√
HEPA13 Air Filter	√





Follow Us

**Zhejiang Flashforge 3D Technology Co., Ltd.**

Address: No.518 XianYuan Road, Jinhua City, Zhejiang Province, China

Service Hotline: +86 579 82273989

[support@flashforge.com](mailto:support@flashforge.com)