

MAXX 2613



4 - 14 years



50 kids



231,4 m²



Material specification

- Hot-dip galvanized and powder coated construction of 200 x 120 mm profile,
- Platforms made of durable anti-slip and waterproof HPL plate,
- Transparent polycarbonate panels with a weather-resistant print,
- Covers made of hot-dip galvanized and powder coated steel mesh,
- Side panels made of Robinia - very durable acacia wood without sharp edges, resistant to weather conditions
- Stainless steel tube slide,
- Elements made of safe, certified rubber with textile reinforcement,
- Steel ropes in polypropylene braid, connected with durable plastic elements, stainless steel or aluminum,
- Calibrated stainless steel chains, preventing fingers entrapment,
- Stainless steel screws and/or screws covered with plastic caps,



Physical development



sliding



observation



community



passage



climbing





3
number of
towers



5
number of
slides



25
number of activity
elements

Product technical sheet

MAXX 2613

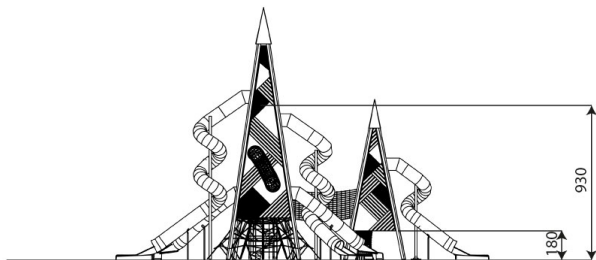
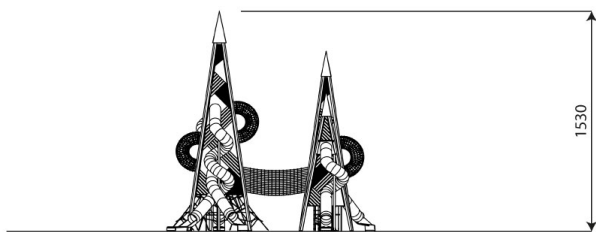
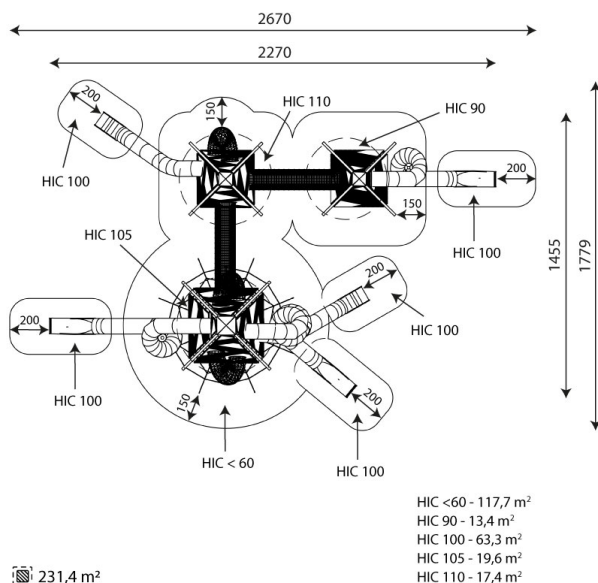
Product data

Length	2270 cm
Width	1455 cm
Total height	1530 cm
Age group	4 - 14 years
Number of users	50 kids
Safety zone	231,4 m2
Free fall height	110 cm
The height of the platforms	180, 360, 400, 530, 720, 930 cm
tube slide platform height	360, 530, 810, 930 cm
In accordance with norm EN	1176-1:2017+A1:2023
Availability of spare parts	YES

Data is subject to change without prior notice.

Additional information

- equipment intended for public playgrounds;
- equipment has a certificate issued by an accredited entity or a declaration of conformity;
- no sharp edges or chinks that would pose a danger of jamming the head, fingers or any other body parts;
- slide should not be installed southwards;
- render is for reference only, the actual appearance of the equipment and its color may vary;



Guarantee

30

30 year guarantee -
Durability of steel and
stainless steel
structural elements

15

15 year guarantee - Durability of steel and stainless steel structures of mobile devices; durability of Robinia wood structural elements

10

10 year guarantee - Structural strength of HDPE, 100% recycled HDPE and HPL elements; structural elements made of 100% recycled material (composite)

5

5 year guarantee - Corrosion resistance of stainless steel and hot-dip galvanized and powder-coated steel elements, resistance to bark beetles and rotting of wooden structural elements

Detailed information in the guarantee card

Vinci Group Sp. z o.o.
Seminaryjna 9 Street
99-400 Łowicz

VAT: 534-250-14-46
PHONE: +48 42 203 24 99 ext. 26
M: +48 793 404 991



biuro@vinci-play.com
info@vinci-play.com
www.vinci-play.com

Surfaces according to EN 1176-1:2017+A1:2023

	Description (mm)	Layer thickness (cm)	Maximum fall heights (cm)
Turf/ top layer of soil (A,B,C)	-	-	≤100
bark (A,C)	Particle size from 20 to 80	30	≤200
		40	≤300
woodchips (A,C)	Particle size from 5 to 30	30	≤200
		40	≤300
sand or gravel (A,C)	Particle size from 0,25 to 8	30	≤200
		40	≤300
synthetic attested (A,B,C)	Tested according to EN 1177		110

Product technical sheet

MAXX 2613

Amount of safe surface corresponding with free fall height:

HIC <60 117,7 m²

HIC 90 13,4 m²

HIC 100 63,3 m²

HIC 105 19,6 m²

HIC 110 17,4 m²

Data is subject to change without prior notice.

